

DATA RECORDER

MODEL OT-1009

Summary

Data recorder OT-1009 can record and display voice coil temperature measured by voice coil thermometer OMT-205A, OMT-205AH or OMT-105A (discontinued) and speaker drive voltage.

This product can connect 8 voice coil temperature devices.

The control PC needs to be prepared by the customer.

Appearance figure



Characteristic

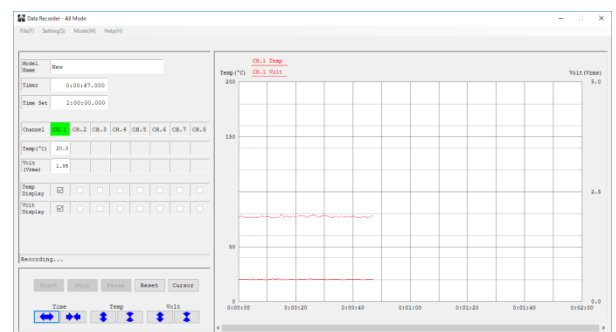
- Data sampling : 0.1sec, 1sec, 10sec, 60sec 4range setting
- There are two operation modes: "All mode" which operates the setting channel simultaneously and "Single mode" which operates by each channel start.

Display

[All mode]

Each channel temperature and voltage are displayed on the same graph.

The vertical axis (temperature and voltage) and the horizontal axis (time) display have the function of scaling.



[Single mode]

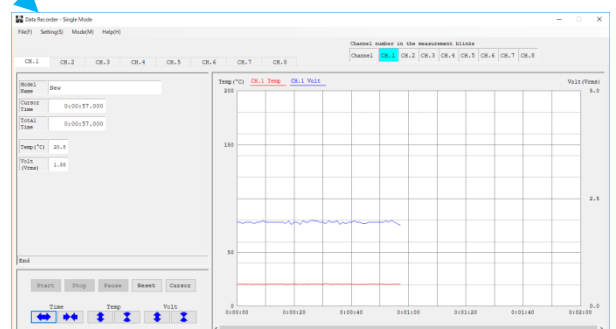
Measurement channel selection tab

Temperature and voltage are displayed on the same graph for each channel.

Each channel is switched by a tab.

Temperature and voltage are displayed on the same graph.

The vertical axis (temperature and voltage) and the horizontal axis (time) display have the function of scaling.



Specifications

【Hardware】	
Number of recording channels	8 each channels temperature and voltage.
Measurement temperature range	0°C to 400°C (Resolution : 0.25°C)
Display voltage range	【OMT-205A】 : 20V range : 0V to 20V (Resolution : 0.025V) 100V range : 0V to 100V (Resolution : 0.25V) 【OMT-205AH】 : 20V range : 0V to 20V (Resolution : 0.025V) 300V range : 0V to 300V (Resolution : 0.25V) 【OMT-105A】 : 10V range : 0V to 10V (Resolution : 0.025V) 20V range : 0V to 20V (Resolution : 0.05V) 50V range : 0V to 50V (Resolution : 0.125V) 100V range : 0V to 100V (Resolution : 1.0V)
Input impedance	470kΩ
Input connector	BNC connector
Interface	USB
Operating power	Supplied through USB
Operating temperature humidity	5°C to 40°C 5% to 90% (No condensing)
Dimensions	220 (W)×60(H)×200(D)mm Projections not included
Weight	Approx.1.5 k g

【Software】	
Sampling Rate	0.1sec, 1sec, 10sec and 60sec (4 range)
Maximum measurement time	200hours (0.1sec sampling) 2000hours (1sec sampling) 20000hours (10sec sampling) 120000hours (60sec sampling)
Graph display	【Each channel independent operation mode (Single mode)】 : Each channel tab switching Temperature and voltage displayed on the same graph The vertical axis (temperature and voltage)and the horizontal axis (time) display have the function of scaling 【Setting channel simultaneous start mode (All mode)】 : Channel selectable Each channel temperature and voltage are displayed on the same graph. The vertical axis (temperature and voltage)and the horizontal axis (time) display have the function of scaling
Cursor function	After the measurement, temperature and voltage numeric display on the cursor position in the graph.
Data storage	CSV form
Characteristic graph	JPEG save and the print output. (Printer is optional)

OT-1009 does not include PC. Please prepare a PC with the following specifications.

OS : Microsoft® Windows®10 (64bit, Japanese or English edition)

Resolution : 1366x768 Memory : Recommended more than 4GB

Design and specifications are subject to change without notice.

Onsoku

©2019 Onsoku Electronic Corporation
<http://www.onsoku.co.jp>